

A = Einbaumaß

A = Installation length

A + B = Gesamtlänge

A + B = Overall length

T = Gewinde

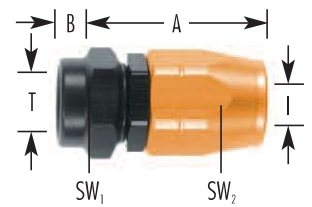
T = Thread

l = Innendurchmesser

l = Inner Diameter

SW = Schlüsselweite

SW = A/F



A + B = Einbaumaß

A = Installation length

A + C = Gesamtlänge

A + C = Overall length

T = Gewinde

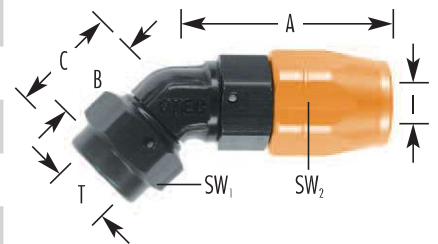
T = Thread

l = Innendurchmesser

l = Inner diameter

SW = Schlüsselweite

SW = A/F



A = Durchmesser

A = Diameter

B = Länge (Ringstückhöhe + Gewinde)

B = Length (Banjo height + thread)

C = Länge

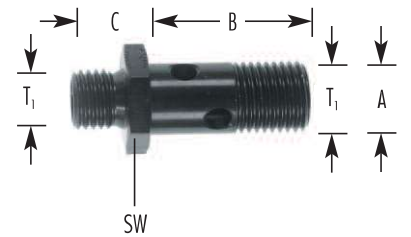
C = Length

T₁ + T₂ = Gewinde

T₁ + T₂ = Thread

SW = Schlüsselweite

SW = A/F



A = Lochdurchmesser

A = Hole diameter

B = Höhe Kugel

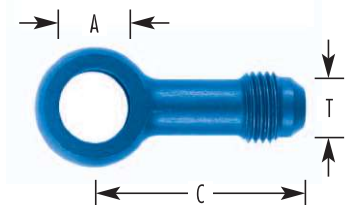
B = Height Banjo ball

C = Länge Lochmitte / Lochende

C = Length center hole / hole end

T = Gewinde

T = Thread



A = Gewindelänge

A = Length thread

B = Einbaumaß

B = Installation length

T₁ + T₂ = Gewinde

T₁ + T₂ = Thread

SW = Schlüsselweite

SW = A/F

